



T A R G E T™

TG-300

INSTRUCTIONS AND CARE

Congratulations, you have just purchased one of the finest spot cleaning guns available today. It is manufactured to TEKMAR's high quality standards from the best available materials and parts. When used as directed it should provide years of trouble free service.

For safe operation it is important to understand that this is not a toy. It is a high powered airless spray gun which has the potential, when not used as directed, to cause a serious puncture wound.

SAFE OPERATING INSTRUCTIONS

Never point the gun at any part of your body or at any other person.

Always check electric cord for damage before using. If damaged do not attempt any temporary repairs.

Only use with adequate ventilation and always wear eye protection.

Use only approved cleaning solvents. Never spray flammable solutions into the air.

INSTRUCTION FOR USE

1. No Rear adjustments are necessary on the gun-it is factory set for optimum performance. To reset gun to factory settings, Turn the rear volume control knob clockwise until it stops-then turn it counter-clockwise 2 1/2 complete turns.
2. Fill fluid bottle 4/5 full and replace on gun. Squeeze trigger until gun primes and fluid comes out of the nozzle.
3. Place garment to be cleaned on a clean absorbent cloth or exhaust surface. Direct a jet of cleaning solvent through stain in a circular motion, until soil is flushed through.
4. To avoid ringing adjust nozzle to wide spray pattern and spray around wet edge to feather out giving a smooth transition from wet to dry.
5. Always test fabric in an inconspicuous area to ensure color fastness.

CARE OF GUN

No routine maintenance of the gun is required, however to ensure it's long life **never use with a corrosive or water based cleaner** (this will also void warranty).

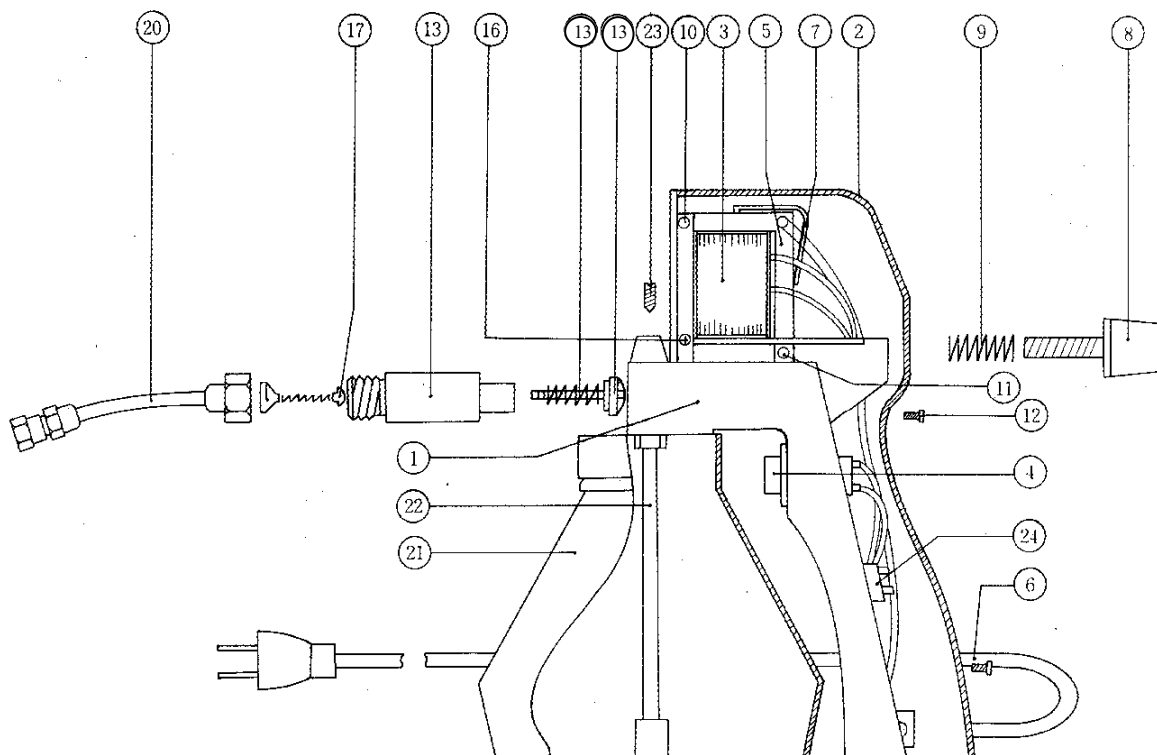
For more information please contact
CUSTOMER LINE (800) 564 1096

www.tekmarltd.com

TEKMAR

TECHNICAL MARKETING LTD.
P.O. BOX 4700 SANTA BARBARA, CA. 93140
TEL (805) 965 0704 FAX (805) 963 7794

TG300 PARTS



Item No.	Part No.	Description
1	300-01	Pump Housing
2	300-02	Cover
3	300-03	Coil Motor
3	300-03B	Coil Motor 220v
4	300-04	Switch
5	300-05	Armature
6	300-06	Power Lead
7	300-07	Armature Spring
8	300-08	Volume Control
9	300-09	Volume Spring
10	300-10	Bolt A Set

Item No.	Part No.	Description	Retail Price
11	300-11	Bolt B Set	\$3.00
12	300-12	Case Screw Set	\$3.00
13	300-13	Pump Assembly	\$30.00
16	300-16	Motor Mount	\$18.00
17	300-17	Valve	\$3.00
20	TG1	Nozzle	\$35.00
21	300-21	Container	\$12.50
22	300-22	Suction Tube	\$9.00
23	300-23	Pump Screw	\$3.00
24	300-24	Terminal Block	\$3.00

CUSTOMER LINE: 800/564-1096 · PHONE: 805/965-0704 · FAX: 805/963-7794

SHIPPING
927 Indio Muerto St.
Santa Barbara, CA 93103

MAILING
P.O. Box 4700
Santa Barbara, CA 93140

ATLANTA SHIPPING
879 Davis Drive
Conyers, GA 30207